

# LonHand Series Product Specification

## USR-WP1

Ver: V1.2



1、 Quick start .....	3
1.1 WLAN Control Operation .....	3
1.2 Equipment Network Settings.....	5
1.3 Remote control.....	8
2、 Product Introduction .....	10
2.1 Product Description .....	10
2.2 Product features .....	10
2.3 Hardware specifications .....	10
2.3 Indicator and Key Function Introduction .....	11
2.4 Smartlink Instructions .....	12
2.5 WPS Instructions.....	13
3、 Instructions for Use.....	14
3.1 Hardware Instructions .....	14
3.2 Connect the wireless router via Webpage configuration.....	14
3.2.1 The configuration process of USR-WP1+WINXP.....	14
3.2.2 USR-WP1 smartphone configuration process.....	17
4、 LonHand of Windows Introduction .....	20
Contact Information.....	24
Disclaimer .....	24
Update History .....	24

# 1、 Quick start

Preparation conditions:

1. Insert the USR-WP1 into the power socket.
2. Installation LonHand software to mobile phone

User can find LonHand software from the IOS system which can be downloaded and installed from App Store search for "LonHand". User also can scan two-dimensional code to download and install.



IOS



Android

## 1.1 WLAN Control Operation

1. Connect Smartphone to USR-WP1's wireless network

Open the settings, find USR-WP1 in WLAN, connected to the network, as shown below.



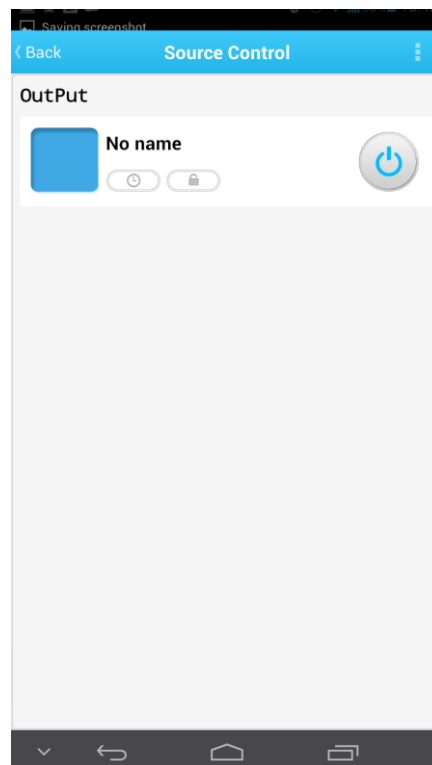
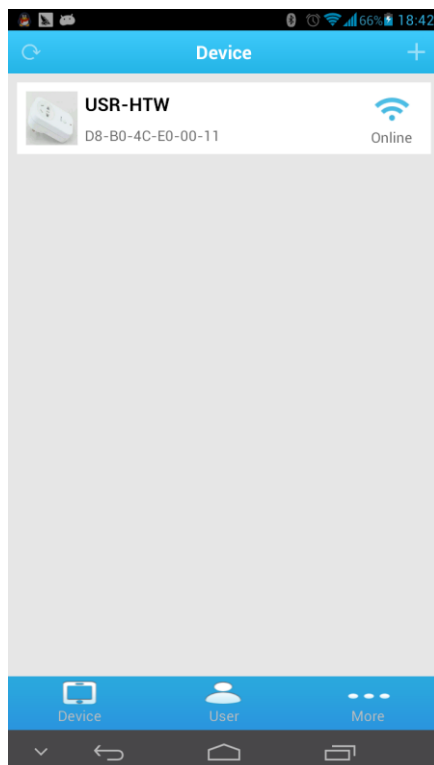
2. Open LonHand software

Click the icon to start the software, click Start.



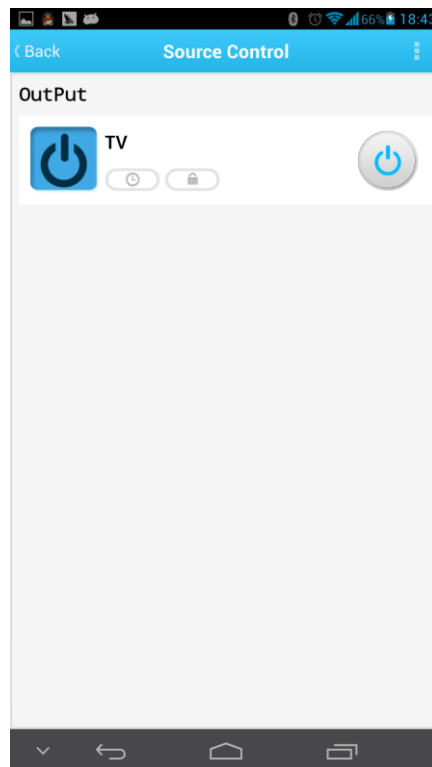
### 3. Control menu

Enter the equipment list, find the USR-WP1, click the USR-WP1 tab, enter into the control menu.



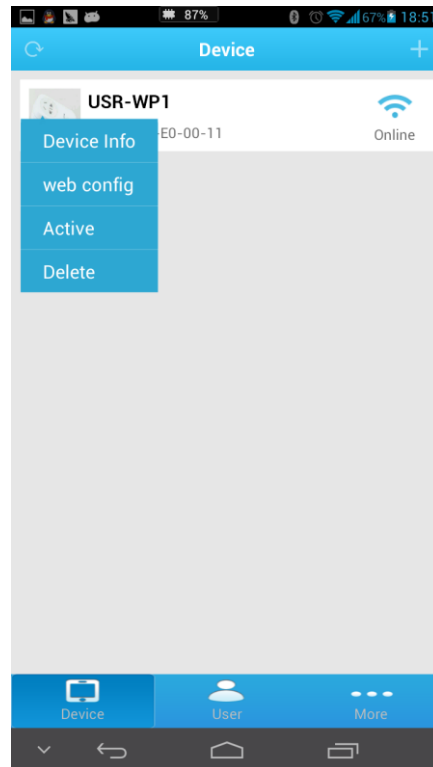
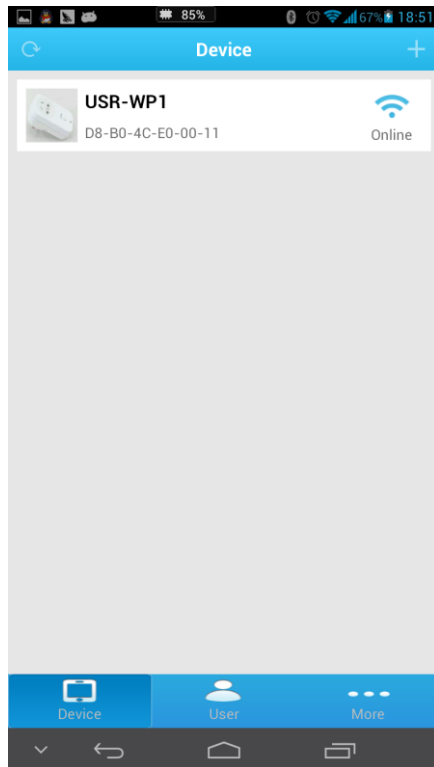
### 4. Control Test

User can control the USR-WP1 now. Via click the switch button, User can open or close the output. User can simply experience the control by smartphone, The following will be a detailed introduction.

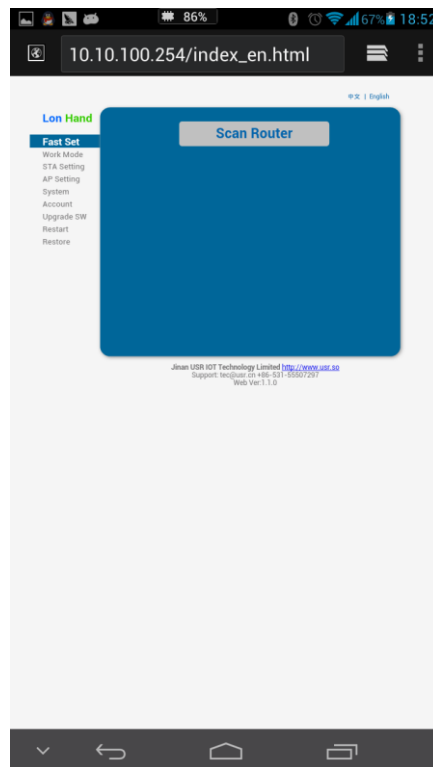


## 1.2 Equipment Network Settings

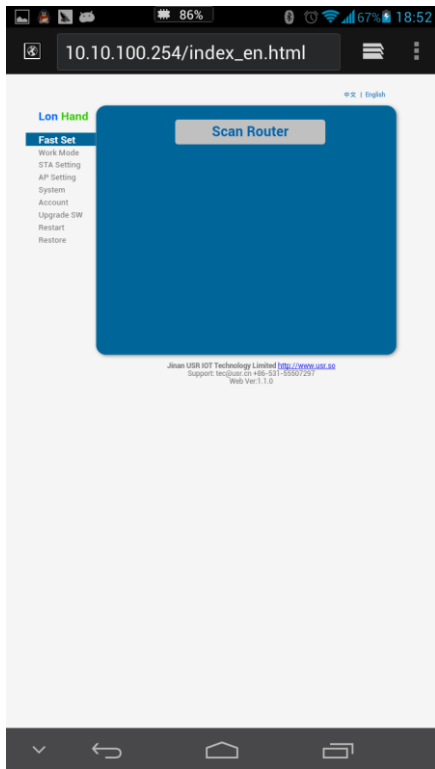
1. Open LonHand software, refresh the equipment list, Long press equipment information icon, select Web config.



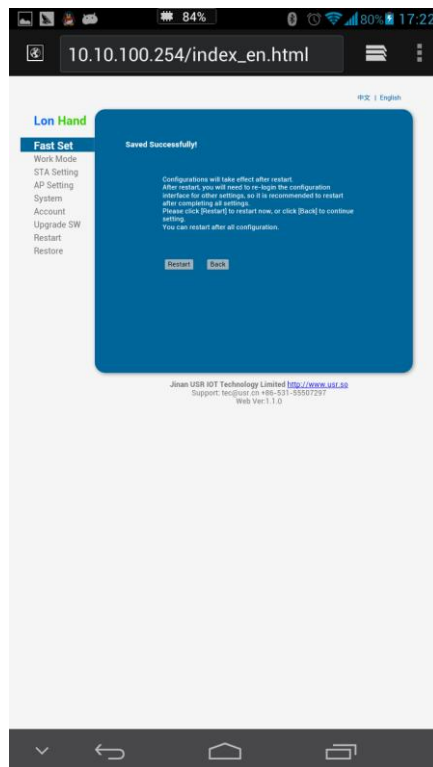
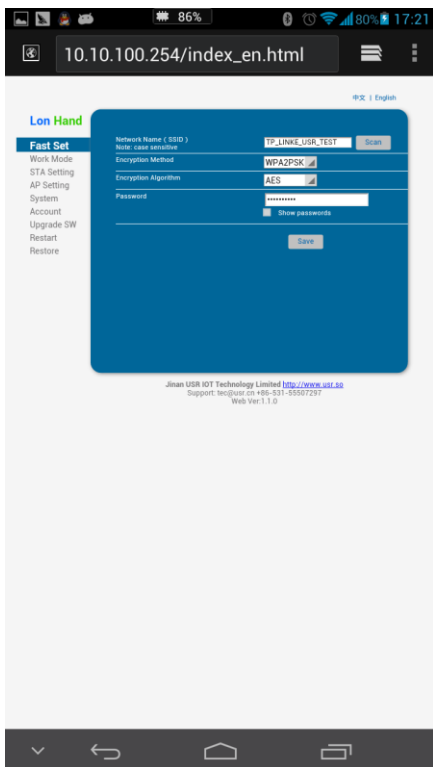
2. After click web config, enter the default user name and password (admin) into pop-up window , enter the fast setting page. The web Webpage default is Chinese Webpage, users can click on the English to switch to the English Webpage.



3. Click Scan router to get the router information list, and then select the router which want to connect, click sure.



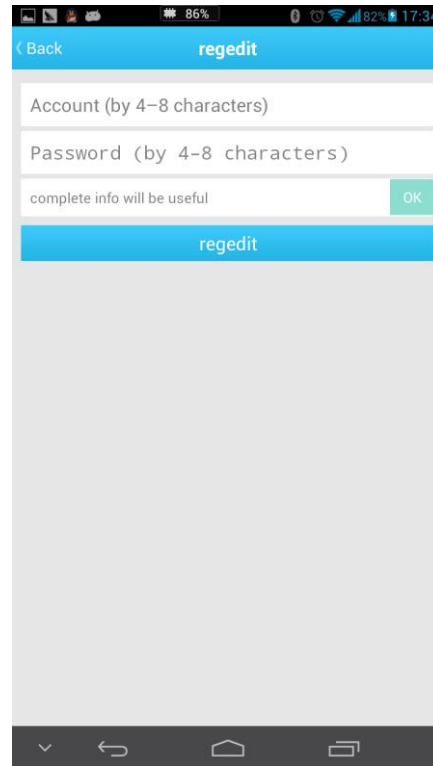
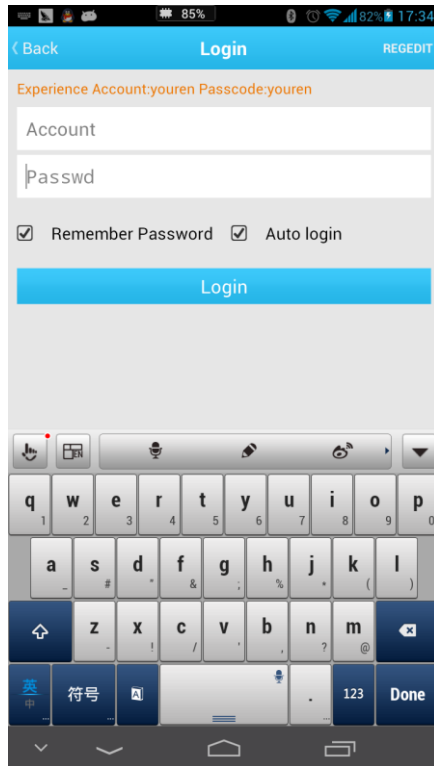
4. Input router passwords, save it, and then restart.



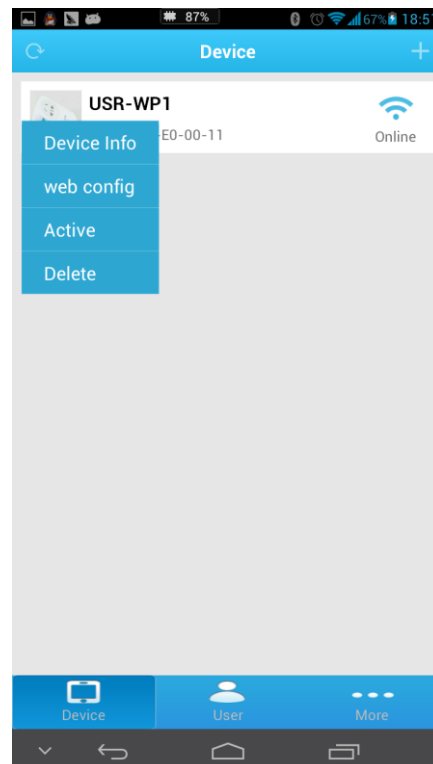
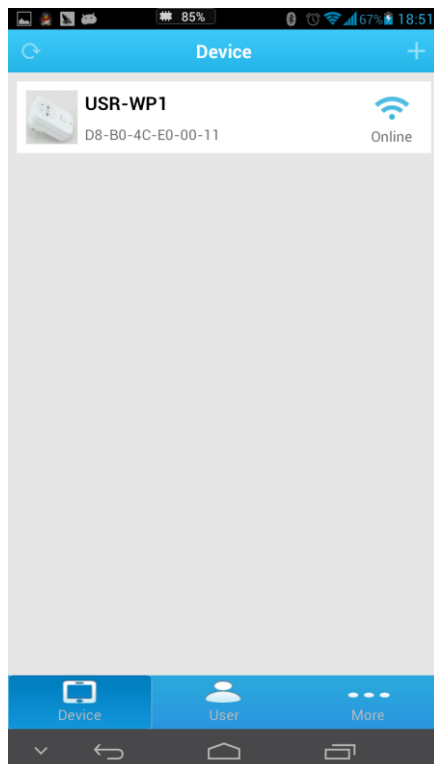
5. WP1 will connect to the router automatically after restart, the blue indicator will light up.

## 1.3 Remote control

1. After WP1 connected to the router, please let mobile phone also connect to the same router. Select the user center in LonHand software, regist remote control account, and then login in.

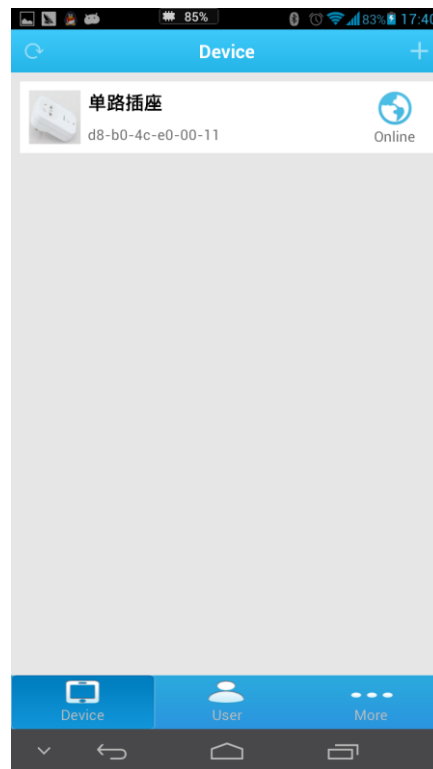
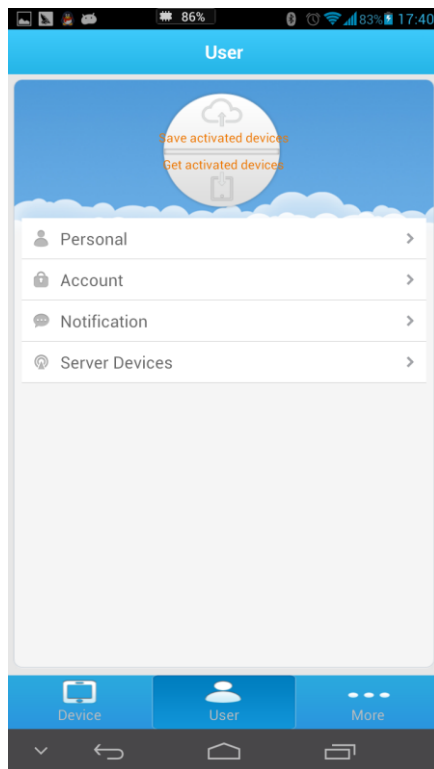


2. Return device interface, refresh the list of equipment, can see the USR-WP1 equipment. Long press equipment information icon, click activate.





3. After activate the device, click get activated devices in the user center. Then disconnect the wireless network, using 2G/3G Internet,, refresh the equipment list, you can see the device icon into a remote icon, now you can control the devices via internet.



## 2、 Product Introduction

### 2.1 Product Description

The USR-WP1 power outlet whose relays can be switched on or switched off by remote control, is WIFI branch of LonHand series product, and is designed for smart-home application.

LonHand series control terminals are developed for the application in the field of smart home, Internet of Things, industrial controlling and so on. They are suitable for rapid deployment, especially for mobile application because the USR-WP1 can be controlled by your cell phone. They can operate with WIFI connection compared to traditional wired connection. These devices are an ideal choice to realize remote control.

These series product are suitable for household application to build smart home for more comfortable life. Also it can be used in industry and agriculture for low cost, high efficiency in intelligent control of the devices. Users are capable to carry out more effective cost control and gain higher profits, because there's no big change and upgrading of your owned equipment under wireless remote control, users can make full use of your original product without more costs for you.

### 2.2 Product features

- WIFI interface, remote control switch
- Support AP/STA/AP+STA three network connections, users realize wireless control diversification
- Support fast network configuration function of Smartlink, WPS
- Support device password authentication, the equipment safety control
- 1 high current output jack
- 5 timer switch function
- Control software supports five platform: Windows, MAC, IOS, Android, Webpage, users can freely choose

### 2.3 Hardware specifications

USR-WP1 supports 110V/220V two kinds of power input; 1 way power output, each with two jacks.

Table.1 USR-WP1 Parameter table

Mechanical Dimensions	95*53*38mm (L*W*H)
Working voltage	AC 110V/220V 60Hz/50Hz
Power consumption	Typical: 2W Max: 3W
Working temperature	-30-85°C
Preservation environment	temperature : -40-85°C Humidity: 5%-95%RH
Maximum output voltage / current	AC 250V/10A
Maximum power output	2200W
Packing List	USR-WP1*1



Picture.1 Product graph

Table.2 Default settings

Network Mode	AP
AP SSID	USR-WP1
AP Password	null
Device Name	USR-WP1
Device Password	admin
Webpage address in AP mode	10.10.100.254
Account / Password of Webpage	Account : admin Password: the same to Device Password

## 2.4 Indicator and Key Function Introduction

### A. Indicator light

- Red indicator light: The relay switch indicator in Normal work;  
Indicates the action which will execute when Key is long press;
- Blue indicator light: Network connection status indicator.

### B. Key

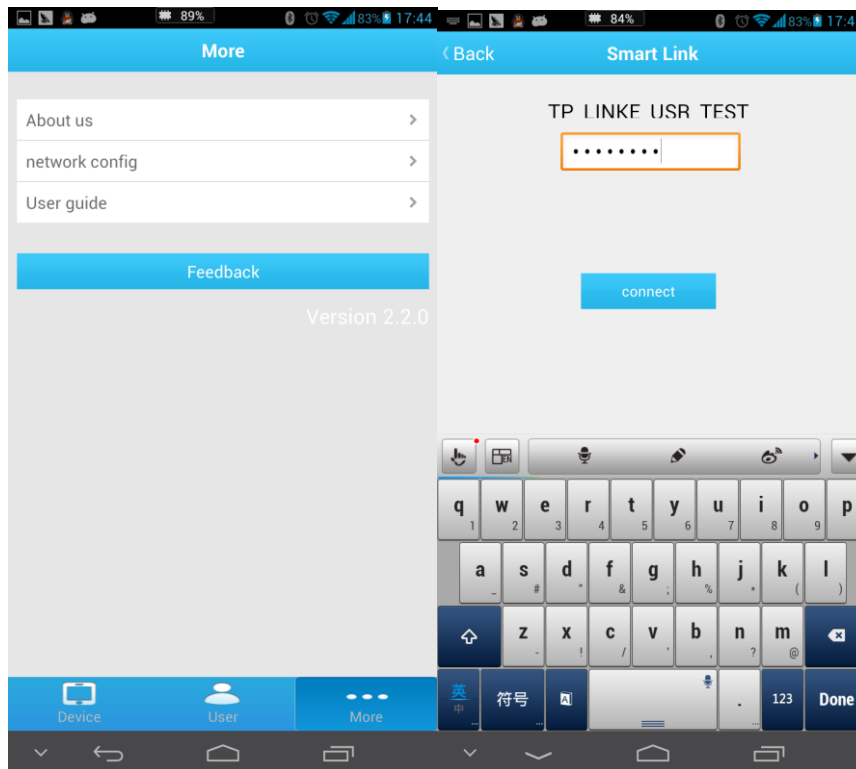
- Short Press(0~3s): Relay on or off
- Long press(5~10s):  
Release the key when the red indicator light single flashing, device will execute the SmartLink intelligent network configuration, if failed configuration after 45s, device will restart.
- Long press(10~15s):  
Release the key when the red indicator light twice flashing, device will execute the WPS intelligent network configuration, if failed configuration after 45s, device will restart.
- Long press(15~20s):  
Release the key when the red indicator light three times flashing, the device will return to factory settings, after 8~10s, the device information will be the default settings.

## 2.5 Smartlink Instructions

Smartlink is a fast and simple method to quickly connect the device to router by smartphone, user can complete the device network configuration conveniently. The method was not successful in some routers, if users attempt failed, please choose to use the Webpage to configurate.

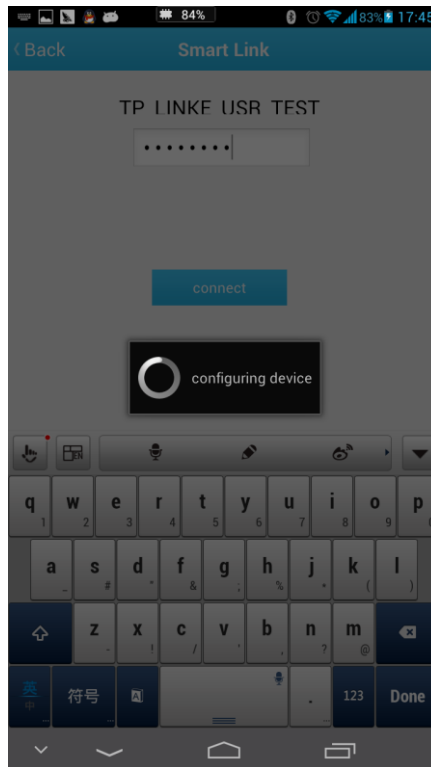
The Smartlink configuration process is as follows:

1. Connect the smartphone to the router, open LonHand software, select the network configuration in more bar, and fill in the router password.



Picture.2 Smartlink Configuration interface

2. Press the key 5~10s, until the red indicator light single flashing, release the key, the device will go into SmartLink working mode, the blue indicator lights is flashing, device is waiting for the configuration.
3. Click the connect button LonHand software, start network configuration, the blue indicator light will become slow flash in the configuration process.



Picture.3 Smartlink configuring

4. When the blue indicator light lighting stably, the network configuration is success, mobile phone will be prompted to configure the success. if failed configuration after 45s, device will restart.

## 2.6 WPS Instructions

WPS is a directly matching method for connection between the device and the router, it require the router support WPS function. Because of the differences of router WPS function, some WPS configuration is not successful, if WPS configuration failed, please select Webpage configuration.

The WPS configuration process is as follows:

1. Start the WPS function of router
2. Press key 10~15s, until the red indicator light double flashing ,release the key to start WPS function.
3. When device searched the WPS signal, the blue indicator would flashing. If the equipment is not found WPS signal within 1 minutes, will end configuration.
4. When the blue indicator light lighting stably, the network configuration is success, mobile phone will be prompted to configure the success. if failed configuration after 45s, device will restart.

### 3、 Instructions for Use

#### 3.1 Hardware Instructions


USR-WP1 starts work after the power supply 3~6 seconds. Now you can open or close the socket switch (see product diagram) by the key. Short press the key, the socket power on, press again, the socket power off.

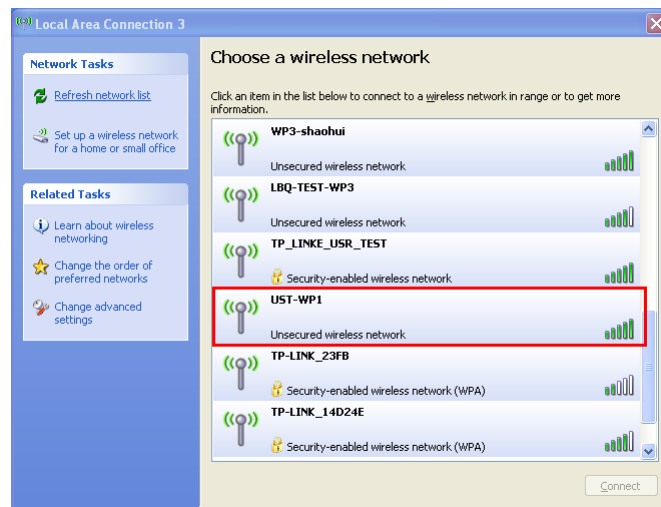
If the socket is not working properly or you set the wrong parameters when used, can restore factory settings to let the socket working properly . Restore factory setting method, please refer to chapter 2.3.

#### 3.2 Connect the wireless router via Webpage configuration

##### 3.2.1 The configuration process of USR-WP1+WINXP

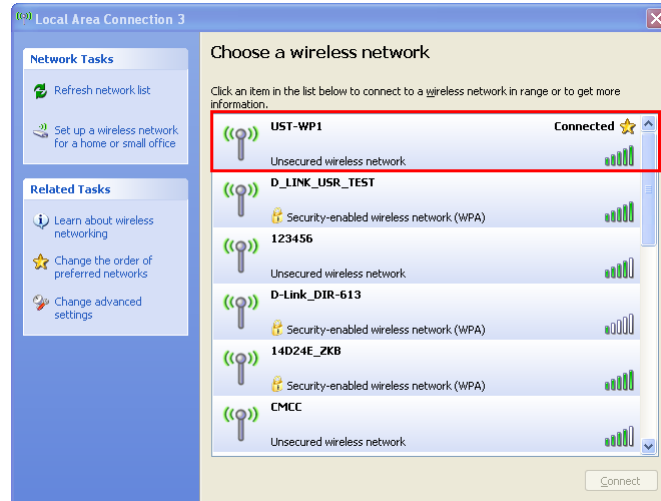
Other computer operating system can refer to this configuration process. The configuration, require the computer has a wireless network card.

1. The WP1's default work mode is AP mode. After the WP1 work, double-click wireless network button  to get the wireless list.



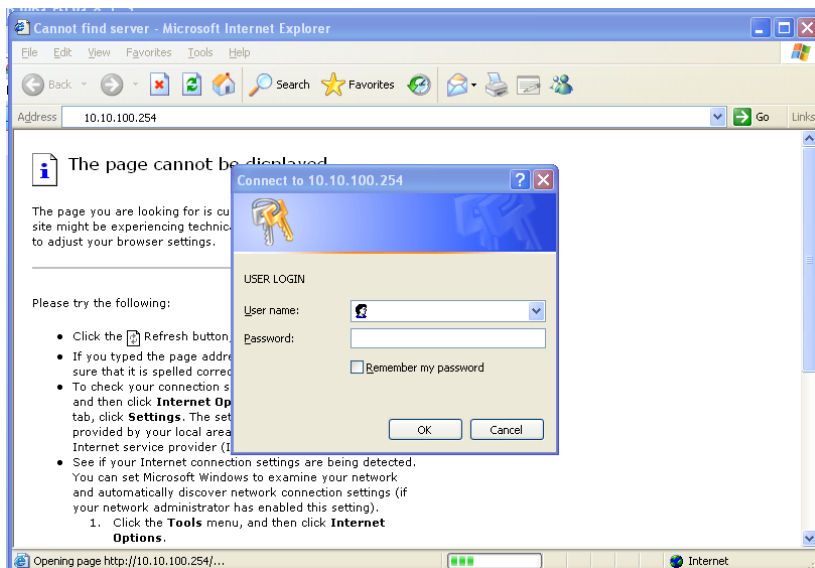
Picture.4 get wireless list

2. Find "USR-WP1" and connect it.



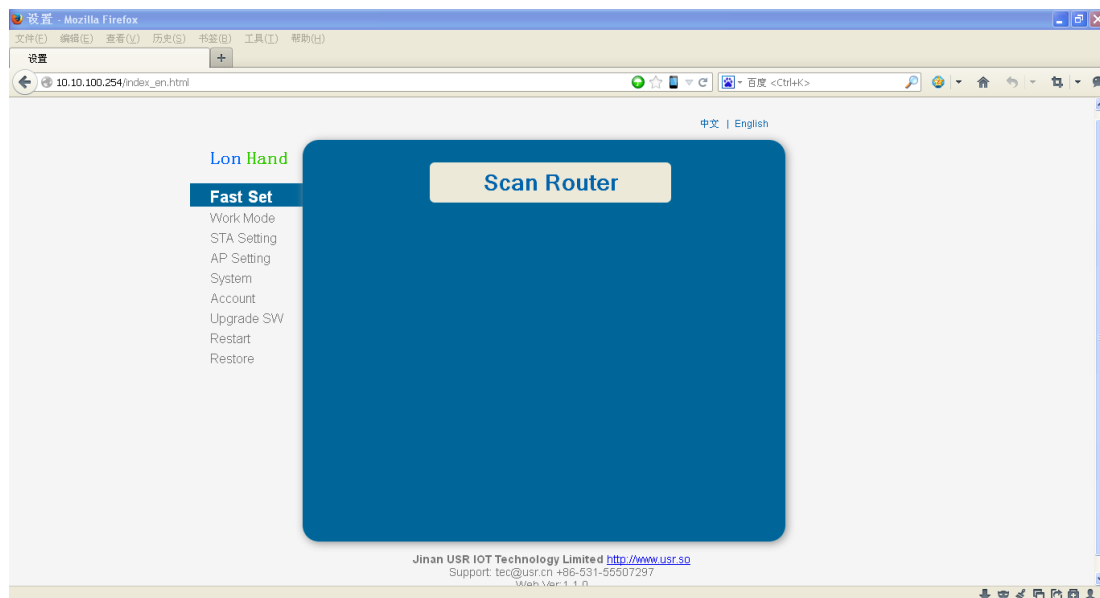
Picture.5 Connect to WP1

3. Open the Website of WP1,IP address: 10.10.100.254.



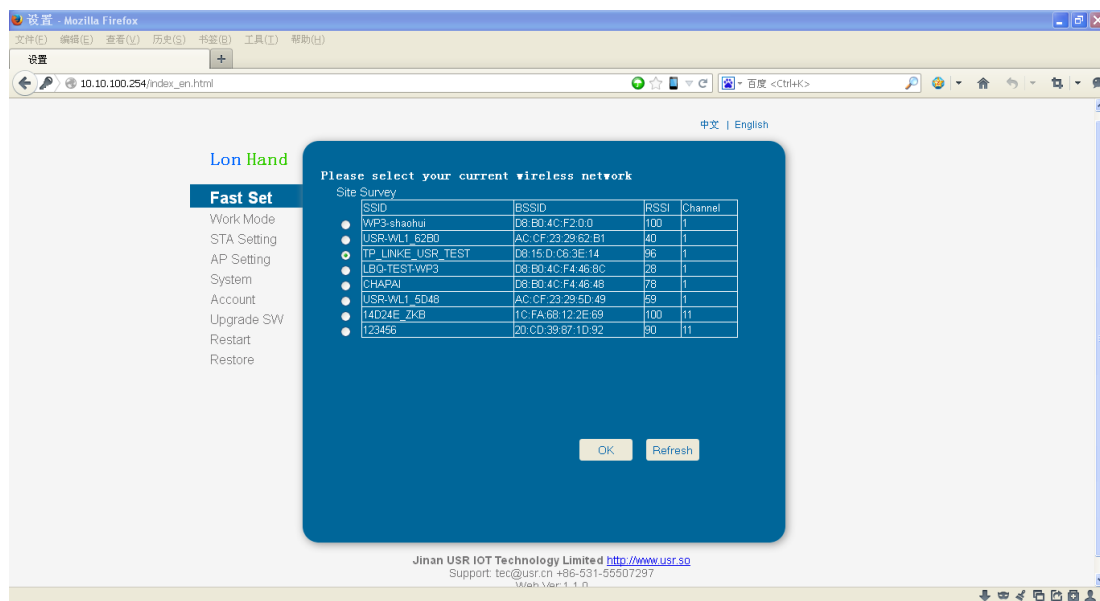
Picture.6 Login the web

4. Input the account and password, default: admin,admin.



Picture.7 Enter the web

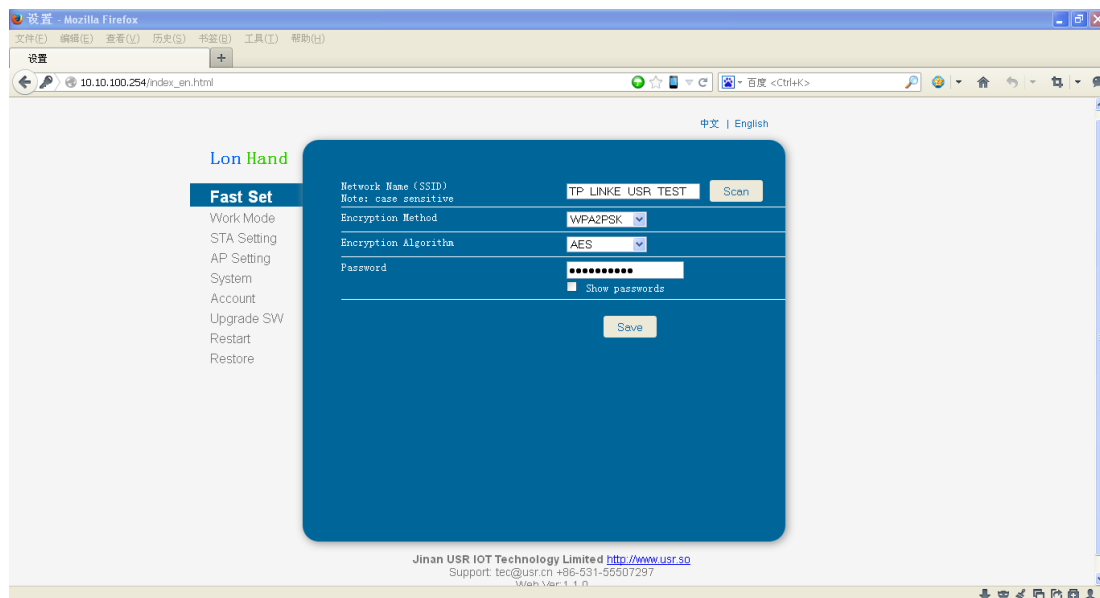
5. Click Scan router to get the router information list, and then select the router which want to connect, click sure。



Picture.8 Scan router

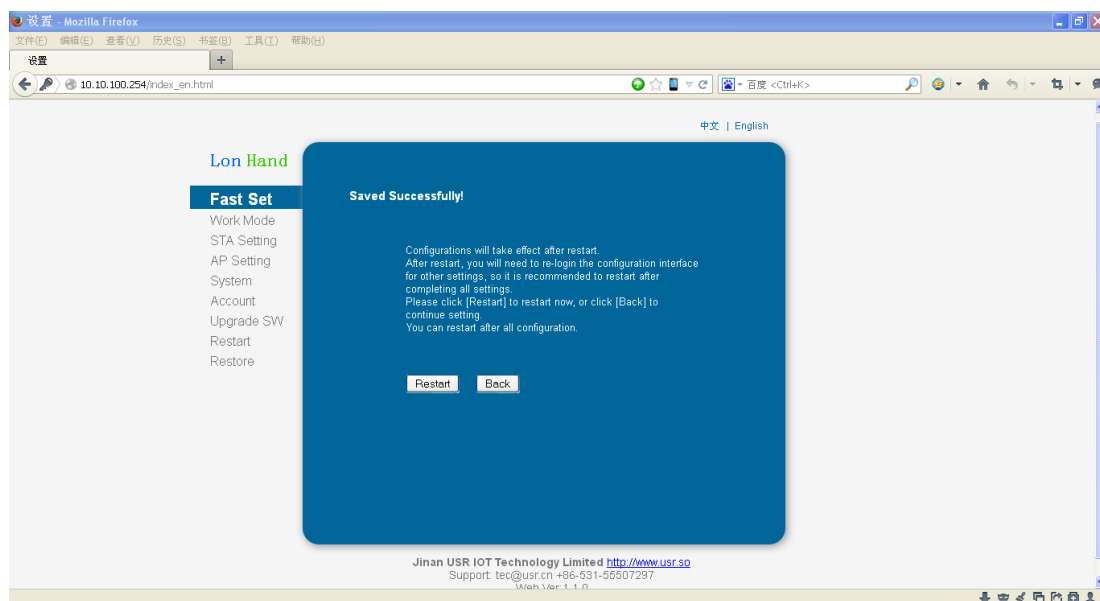
6. Input router passwords, save it.





Picture.9 Input the router password

## 7. Restart WP1.



Picture.10 restart

WP1 will connect to the router automatically after restart, the blue indicator will light up. Now you can control WP1 via internet. The detailed operation please refer to the manual of LonHand.

### 3.2.2 USR-WP1 smartphone configuration process

USR provides the control software of Android and IOS system, the following described the configuration process via android mobile phone as an example.

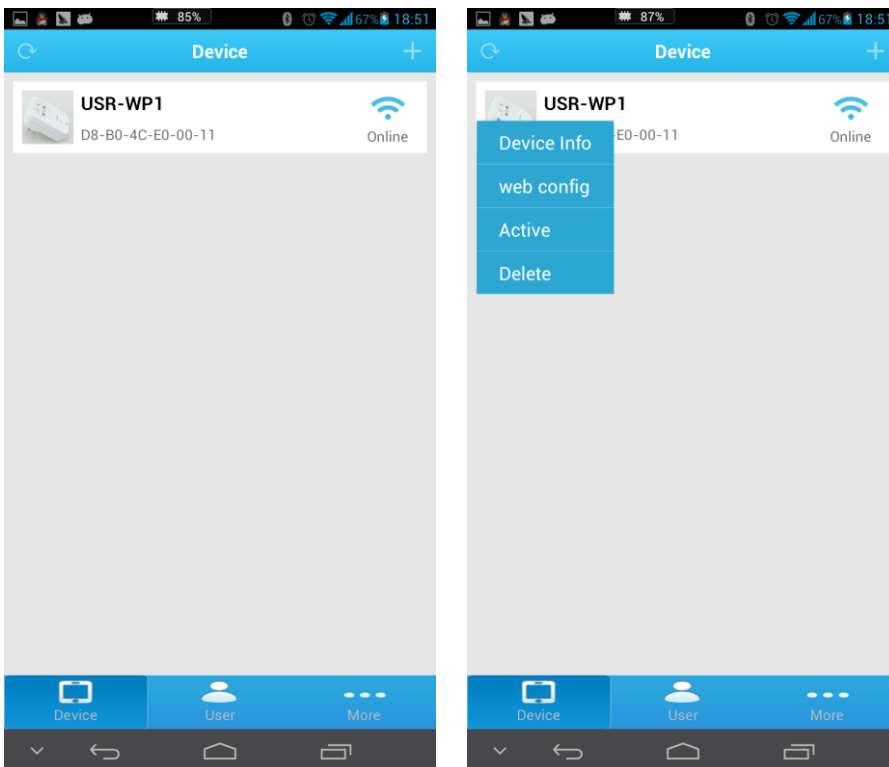
#### 1. Connect Smartphone to USR-WP1's wireless network

Open the settings, find USR-WP1 in WLAN, connected to the network, as shown below



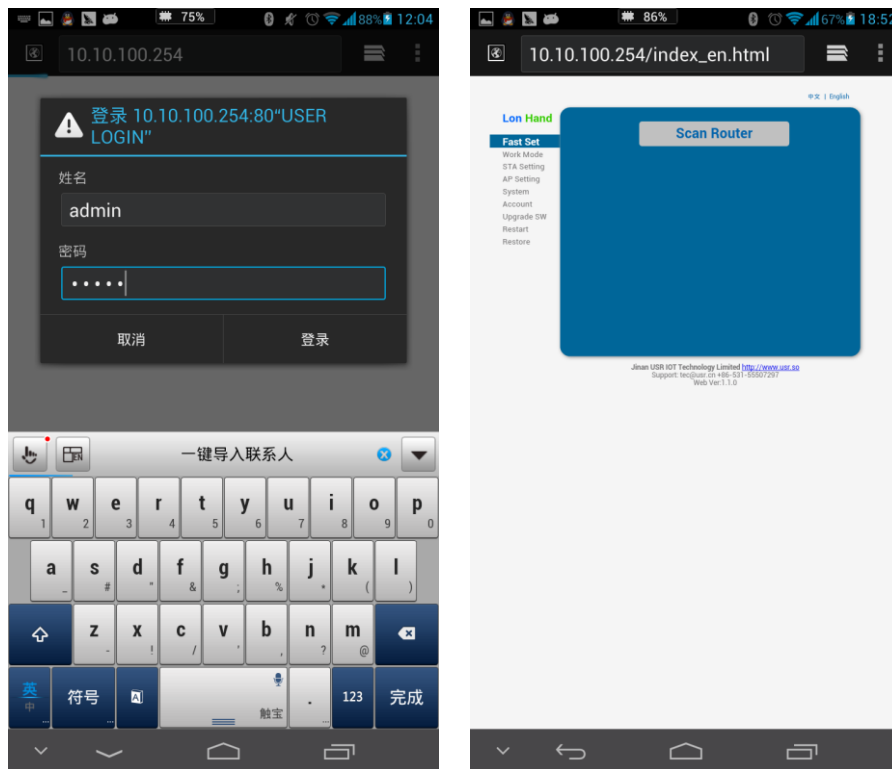
Picture.11 Connect to WP1

- Open LonHand software. Enter the equipment list, find the USR-WP1, click the USR-WP1 tab, enter into the control menu.



Picture.12 Choose web config

3. After click web config, enter the default user name and password (admin) into pop-up window , enter the fast setting page. The web Webpage default is Chinese Webpage, users can click on the English to switch to the English Webpage.



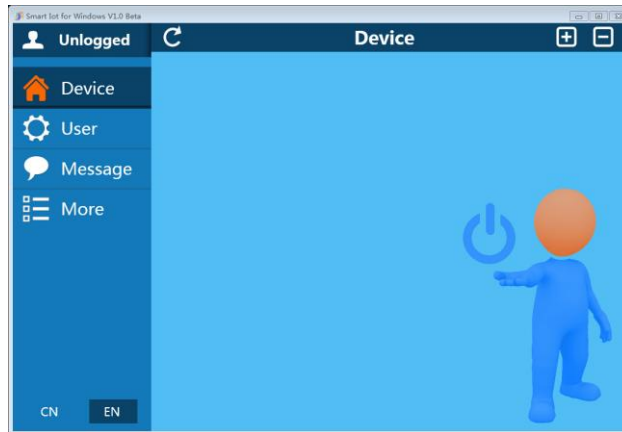
Picture.13 Enter website of WP1

The follow steps is similar to computer, can refer to 3.2.1 to continue setup.


## 4、 LonHand of Windows Introduction

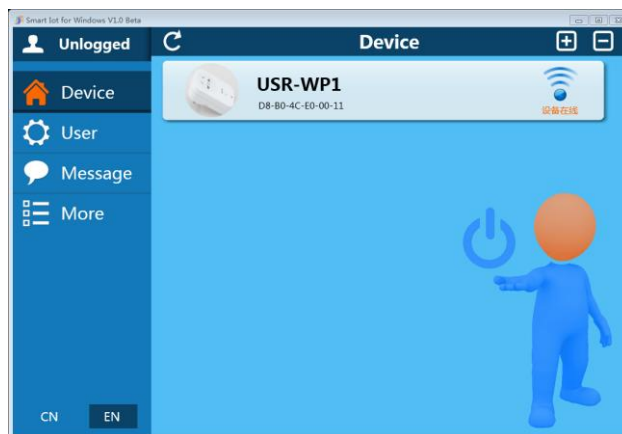
The computer and USR-WP1 socket need to connect to the same router. The detailed operation please refer to the manual of LonHand.

1. Open the LonHand software



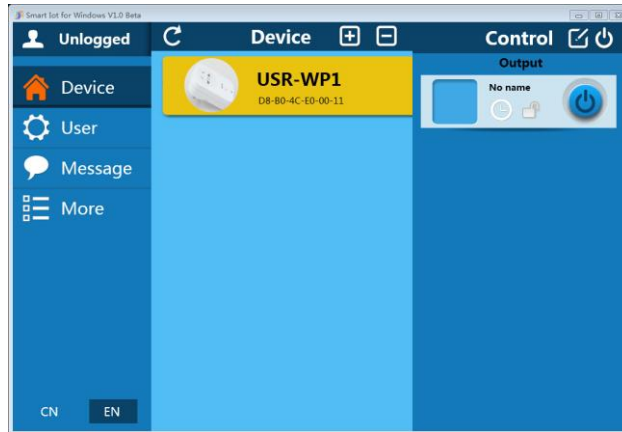
Picture.14 LonHand interface

2. The software will search WP1 automatically. If you don't see WP1 in software, please click  to search again.
3. After searched WP1, you can see the information as following. If the WIFI symbol is gray, means WP1 is not connected to computer. If the WIFI logo is blue, means WP1 is connected to computer.



Picture.15 Device list

4. Click WP1, enter into control menu.

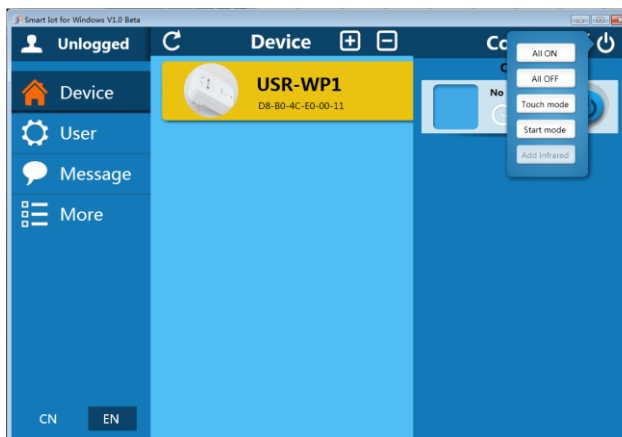


Picture.16 control menu

The control menu display the control button, the default is closed state, you can click button, as shown in the diagram, to control socket. When the socket correctly execute the action, software interface button will have state indicator:



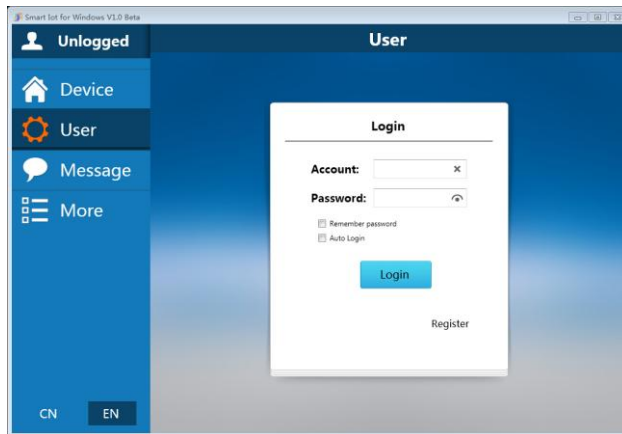
5. you can also set WP1 all open or closed by the upper right button , the interface is as follows:



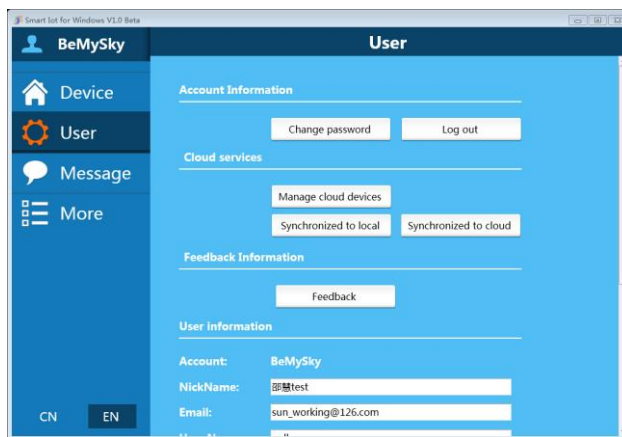
Picture.17 all on/off

## 6. Remote control

First, you need to register a user account (account number and the password 4-8 characters, can be numbers, letters, combination of numbers and letters, case sensitive), and then login.




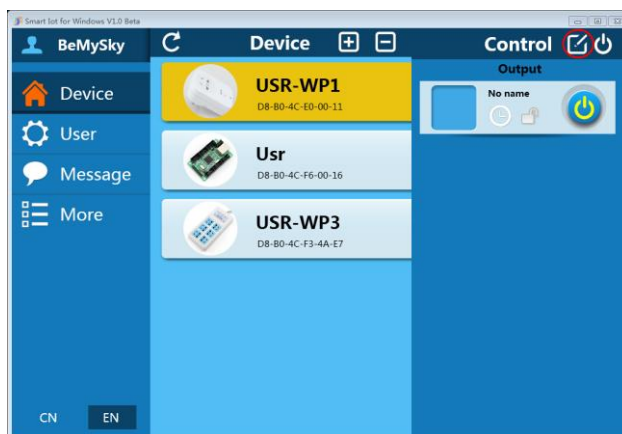
Picture.18 User menu interface



Picture.19 remote account management interface

## 7. Active WP1

Return device interface, refresh the list of equipment, can see the USR-WP1 equipment. Click , then click active. After active device success, click Synchronized to local, refresh the equipment list, you can see the device icon into a remote icon, now you can control the devices via internet.



Picture.20 Active interface



Picture.21 Active device



Picture.22 Remote control

Mobile phone remote control refer to the first chapter or the manual of LonHand.

## Contact Information

---

Company: Jinan USR IOT Technology Limited  
Address: 1-728, Huizhan Guoji Cheng, Gaoxin Qu, Jinan, Shandong, China  
Tel: 86-531-55507297 86-531-88826739-803  
Web: <http://en.usr.cn>  
Email: [sales@usr.cn](mailto:sales@usr.cn), [order@usr.cn](mailto:order@usr.cn)

---

## Disclaimer

This document provides information about USR-WP1, this document does not grant any license to intellectual property rights. Except the responsibility declared in the product sale clause, USR does not assume any other responsibilities. In addition, USR does not make any warranties for the sale and use of this product, including the suitability of the product for a particular purpose, merchantability or fitness for any patent, copyright or other intellectual property infringement, etc. USR may make changes to specifications and product descriptions without notice.

## Update History

- V 1.0 06-30-2014 First Version
- V 1.1 07-12-2014 update product features
- V 1.2 07-25-2014 updated product five kinds of specifications.

**<END>**