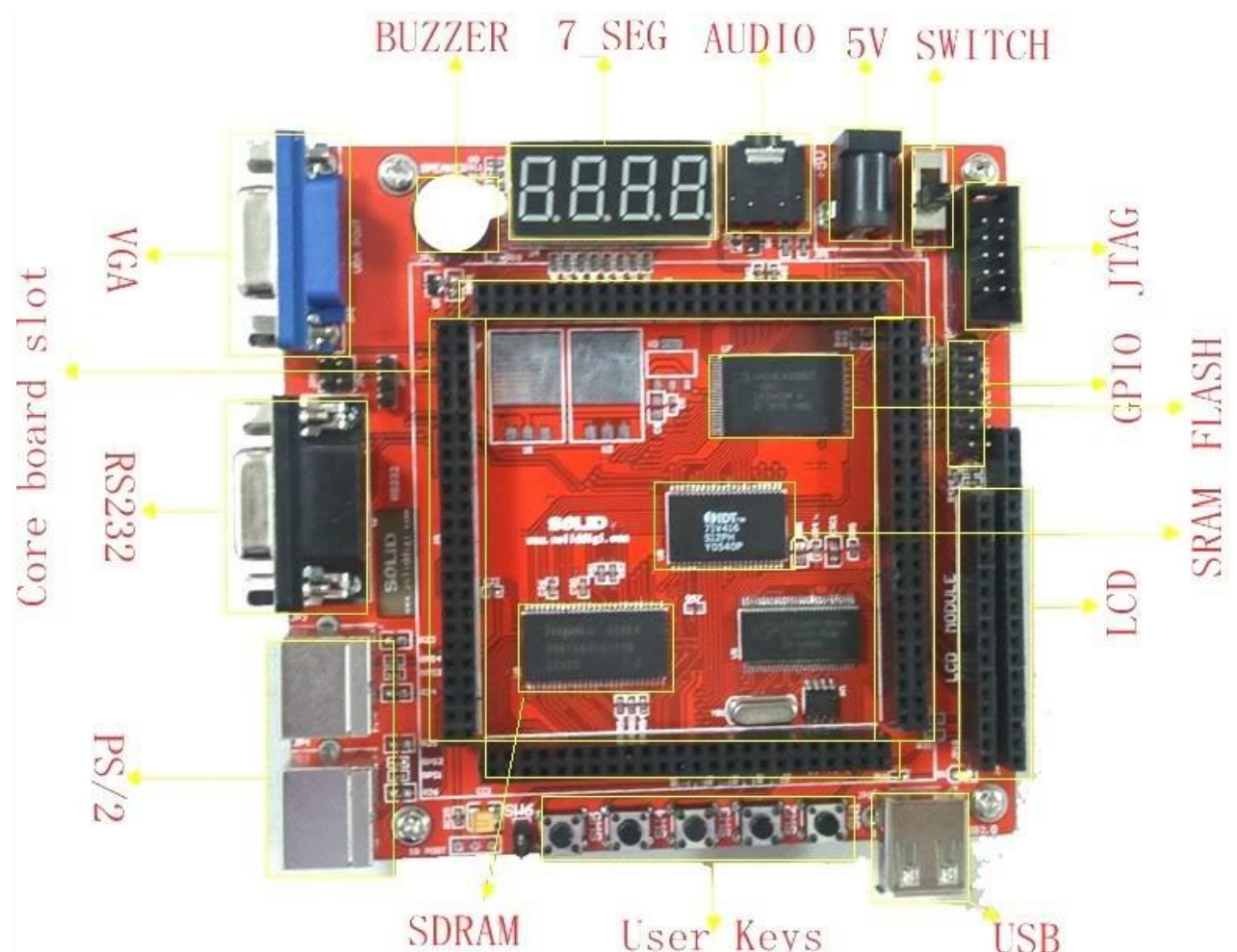


The FPGA used on the core board is 90nm process Xilinx XC3S1000. It can be widely used in communications, military, power, control, consumer electronics and automotive electronics.

This chip is a VLSI programmable logic device based on SRAM process.

It features an embedded XtremeDSP. It has rich sources which includes 1 million equivalent system gates, 432Kbit block SRAM and 24 multipliers (18*18) and 175 differential I/Os.

Spartan-3 devices support 24 type mainstream I/O standards which include PCI 32/33 and PCI 64/33 and other core functions of the parallel interfaces used in telecommunications and networking.



Hardware Included:

- DC Wall Adapter
- RS232 cable
- USB cable
- 16X2 LCD

